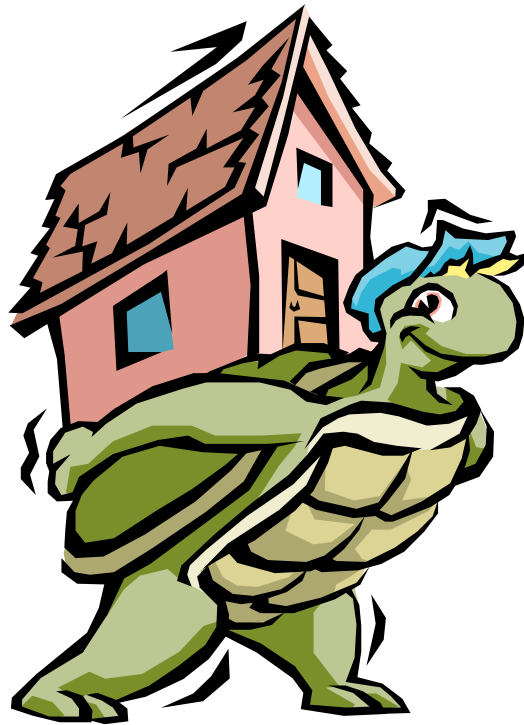


# Room Draw 2011-2012 Official Guidelines



[www.eckerd.edu/housing](http://www.eckerd.edu/housing)

---

## Table of Contents

<b>What is Room Draw?</b>	<b>3</b>
<b>What Happens at Room Draw</b>	<b>4</b>
<b>Major Changes in Room Draw for 2011-2012</b>	<b>5</b>
<b>Housing Descriptions for 2011-2012</b>	<b>6</b>
<b>Housing Costs for 2011-2012</b>	<b>7</b>
<b>How and What to Prepare Before Room Draw</b>	<b>8</b>
<u>Eligibility</u>	8
<u>Part-Time Students</u>	8
<u>Students Currently Abroad</u>	8
<u>Students Going Abroad</u>	8
<u>Clearance by Student Accounts</u>	8
<u>Housing Agreement</u>	9
<u>Squatting your Room</u>	9
Priority System for Single, Pet, H&W, Community Service and Traditional housing	10
Priority System for Omega, Nu, and Oberg Suites	11
<u>Point System for Suites/Apartments</u>	11
<u>Forfeiture of Room/Space</u>	12
<b>Description of Room Draws</b>	<b>12</b>
<u>Omega</u>	12
<u>NU</u>	13
<u>2nd Floor Oberg Suites</u>	14
<u>Singles</u>	14
<u>Health &amp; Wellness</u>	15
<u>Pet</u>	16
<u>Community Service</u>	17
<u>Traditional</u>	17
<b>What Happens after Room Draw</b>	<b>19</b>
<b>Room Draw 2011 Calendar</b>	<b>20</b>

## What is Room Draw

Room draw is a housing lottery that occurs during the middle of Spring Semester to secure campus housing for the 2011-2012 academic year. Students follow a set of pre-determined rules and regulations that are published online and in the annual Room Draw Official Guidelines Booklet.

Students choose their rooms by following the room draw schedule for the various options in housing.

Any questions that this booklet does not answer may be directed to the Housing Office located in Student Affairs in Brown Hall.



**A valid EC student ID is required to participate in Room Draw!!!**

## What Happens at Room Draw

**All Room Draws will take place in Fox Hall. Please arrive 10 minutes prior to your scheduled draw. All class prioritization will already have been completed. There will be ABSOLUTELY NO negotiations on class status after March 28, 2011. When your Draw and Class is announced, you will form a line with your planned roommate to enter Fox Hall. Once in line, the process will be as follows:**

- Each student will be given a color-coded index card with his/her name, class level, and graduation date listed.
- You will draw a numbered tile as described in *Priority System within Class*.
- Your tile number will be written on your card and recorded on a master number list.
- You will sign a 2011-2012 housing agreement and receive a pamphlet for the Student Personal Property Insurance.
- You will sit down with your card.
- When you are called to join the selection line (by number), you will take your card to that Residence Life staff member.
- When you reach the front of the line, you will be directed to the area representing the complex in which you wish to live.
- At the table, you will indicate your room choice to the Room Draw assistants. This choice will be recorded on your card and on the master housing list.
- Once your name is on the master housing list, you will not be allowed to make a change **until after the entire Room Draw process is completed.**
- You will take your card to the Computer Input section of Fox Hall. Your card will be collected, and the information will be entered into the housing database.
- If, during one of the Room Draws, you fail to make a selection, your card will be collected and placed back into the file until the next Room Draw.

**Your Room Draw process will end once you have submitted a signed Housing Agreement, your housing assignment card, and your information has been entered into the computer.**

## Major Changes in Room Draw for 2011-2012

- The Office of Student Affairs reserves the right to decline residency based on relevant conduct record **or history of room or dorm damage** before and after Room Draw.
- Prasch House in Alpha will no longer be a Pet Dorm. It will now be Co-Ed by floor.
- Hiaasen in Zeta will be All-Female.
- Squatting applications will be due by 12 Noon, April 18, 2011
- All Omega suites will be offered as co-ed per application rules.
- Current sophomores, juniors and continuing seniors will be given priority for Omega and NU.
- NU Suites must be reserved by a group of 8 students and will be single gender suites only.
- You must have a planned roommate for any room draw except single room draw. If you have a planned roommate but are unable to complete your application by 12 Noon, Monday April 18, 2011 you will be able to participate in Room Draw in Fox Hall at 3:30pm on April 20, 2011 with your roommate.
- Darwin, Ibsen, Beecher, Hubbard, and Scott will be designated as Pet houses.
- All of Sigma Complex will be open for room draw and squatting will be allowed for those students who currently reside in Sigma. **Sigma has been designated as a Global Living Community.**
- Depending on freshmen gender numbers, a house may switch to single sex during the summer. If this happens, students affected will be contacted via their Eckerd Email account to make alternate housing arrangements.
- **Notifying the Housing Office of cancellation after June 1, 2011 will result in a \$500 cancellation fee for all housing.**
- Eckerd College **WILL NOT** accommodate early arrivals in the residence halls. Any student arriving prior to the check-in date must arrange alternate off-campus interim accommodations.
- **If you are late for your designated Room Draw, you will automatically forfeit your priority for any selection.**

## House Descriptions 2011-2012

<b><u>Alpha:</u></b>	Gandhi (F) Gershwin (W) Mill Prasch	<b><u>Gamma:</u></b>	Freeman Knox (C) Newton (F) Wilson
<b><u>Beta:</u></b>	Benedict (F) Dante (W) Darwin (P) Kennedy	<b><u>Iota:</u></b>	Byars (W) Wrenn Wittner Lukens (F)
<b><u>Delta:</u></b>	Berkeley Copley Ibsen (P,F) James	<b><u>Kappa:</u></b>	Leighton Morris Oberg Scott (P)
<b><u>Epsilon:</u></b>	Beecher (P,W) Blakely Dalton Douglas	<b><u>Zeta:</u></b>	Henderson Hiaasen (F) Hubbard (P) Kirby
			<b><u>Sigma, NU, Omega</u></b>

**(F) = All-Female House**

**(P) = Pet House** - These designated houses are for those students with registered family pets living on campus. Pets cannot exceed the 40 pound weight limit and must be family owned for at least a year before being brought on campus (**i.e. NO puppies or kittens**). Freshmen cannot have pets on campus until their second semester. All pets and domestic animals must be registered with Pet Council. Contact Residence Life for more information.

**(W) = Health and Wellness House** - These houses are for those students interested in an environment that specifically promotes healthy living. This consists of smoke-free, alcohol-free and substance-free houses that sponsors wellness programming

**(C) = Community Service House** - The community service house will be overseen by a faculty member and monthly service projects will be made available to all residents.

- \*\* NU 1, 5, 9, and 13, Omega 107, 207, 307, Sigma 100, 115, 200, 213, 214, 215 are reserved by the Residential Life staff and will not be part of room draw.
- \*\* Any student who has a medically-related need that may affect his or her room assignment must submit a letter from a physician certifying the condition. This request must be submitted for approval to the Office of Health Services before 5pm on Friday, April 1, 2011. Each request will receive serious evaluation, with decisions being based on housing availability and current legal standards. For more information please visit: <http://www.eckerd.edu/counselinghealth/dss/housing.php>.

### Housing Cost for 2011-2012

<u>Housing</u>	<u>Annual</u>	<u>Per Semester</u>
Traditional Double	4858	2,429
Traditional Double/Single	6966	3,483
Traditional Single	6232	3,116
Traditional Corner-Double	5482	2,741
Iota - Double	6438	3,219
Iota - Single	7198	3,599
Nu-Dorm	5708	2,854
Oberg - Double	4860	2,430
Oberg - Single	6456	3,228
Oberg - 2person Suite	6456	3,228
Oberg - 4person Suite	5462	2,731
Omega - Double	6682	3,341
Omega - Single	7504	3,752
Sigma	6350	3,175

## **How and What to Prepare Before Room Draw**

### **Eligibility**

A student is eligible to participate in Room Draw if they are currently enrolled as an Eckerd College student and will be full-time during the Fall academic term. A student with a graduation date prior to December 2011 is **ineligible** to participate in Room Draw.

### **Part-Time Students**

Students who will be part-time in the Fall desiring to live on campus must submit a written request to the Housing Review Committee (housing@eckerd.edu) prior to Monday, April 4, 2011 for housing consideration.

### **Students Currently Abroad**

If a student, currently studying abroad seeks on-campus housing for the fall term, he/she must:

- Contact the Housing Office via Eckerd E-mail at housing@eckerd.edu
- State preferences of roommate and style of housing
- Contact potential roommate and have the person confirm request with the Housing Office

These contacts must be made before Monday, March 28, 2011 so arrangements can be made prior to the beginning of the Room Draw process.

### **Students Going Abroad**

Students who will be abroad for the Fall 2011 semester cannot participate in Room Draw. These students should contact the Assistant Director of Housing for information about Winter/Spring 2012 housing options prior to embarking on their journey.

### **Financial Clearance by Student Accounts**

To participate in the Room Draw process, a student must be financially cleared by the Business Office. A delinquent balance will **prohibit** your participation in Room Draw. Students with a delinquent balance will receive written notification prior to Room Draw procedures to provide them with an opportunity to reconcile their account.

### **Housing Agreement**

A few important points of the agreement include:

- Housing Agreements are in effect from the date of signing through the end of Summer 2012.
- The agreement may be cancelled without penalty prior to June 1, 2011 by notifying the Housing Office **in writing** at housing@eckerd.edu.
- Notifying the Housing Office of cancellation after June 1, 2011 will result in a **\$500** cancellation fee for all campus housing. The Housing Agreement **does not** connect the student to a specific room. It only provides for housing accommodations on campus per stated rules and regulations.

### **Squatting your Room**

A student has priority to maintain their current **double or corner/double** room in traditional housing (excluding Nu, Oberg Suites, and Omega) for the 2011-2012 academic year by adhering to the following procedures:

- You can pick up a squatting application from the Housing Office starting Monday, March 21, 2011.
- Squatting Applications are due back to the Housing Office by 12 Noon, Monday, April 18, 2011.
- **If you squat your room, you may not participate in any other aspect of Room Draw.**
- Students may only squat rooms together with a roommate. A single individual may not squat a room and must, instead, go through Room Draw with a planned roommate.
- Students wishing to squat their room with someone other than their current roommate may reserve the room by having your current roommate, send an email to housing@eckerd.edu. If the current roommate also attempts to secure the room with someone else, the two current roommates both lose the right to secure the room through "Squatting."
- A copy of each student ID is required.
- The gender of the house's RA determines the gender assigned to each floor for the following 2011-2012 year.
- It is possible that you will have to squat the room directly above or below your current room.
- Squatting is **not** available for Single rooms and Suite Style living.

**Priority System for Single, Pet, Health & Wellness, Community Service and Traditional Room Draw.**

For Single, Pet, Health & Wellness, Community Service, and Traditional Room Draw, a **seniority system** based on current class standing is used to create an organized order for students to select rooms. This is verified by the Office of the Registrar. Class standing will be posted as of 5pm on Wednesday, March 9, 2011. For Room Draw purposes, class standing will be considered binding as of Monday, March 28, 2011. If you are unsure of your standing, please speak with a staff member in the Registrar's office prior March 28, 2011.

Each student within a specified class (freshman, sophomore, junior, continuing senior) will draw a lottery number that will place them on a selection list. The person who draws the lowest numbered tile will have the first opportunity to choose a room during that Room Draw.

*Example:* Assume that Stewie and Quagmire are juniors. If Stewie draws tile number 3 and Quagmire draws tile number 48, Stewie will choose his room before Quagmire.

For Pet, Health & Wellness, Community Service, Sigma, Iota and Traditional Room Draw, any pair of roommates with at least one junior or senior will draw a tile first. Each junior or senior will draw a tile which will be recorded. If both roommates have junior or senior status, they will each draw a tile with the lowest number being recorded. These pairs will then proceed in numeric order to choose a room. After all juniors or seniors have chosen their rooms, sophomores will draw tiles, followed by current freshman.

*Example:* Assume Lois is a senior and Meg is a sophomore. They want to be roommates. They would attend the junior/senior draw, but only Lois would draw a numbered lottery tile.

***This process is repeated for every class level.***

### **Priority System for Omega, NU, and Oberg Suites Room Draw**

Priority for Omega, NU, and Oberg Suites Room Draw is determined according to current class standing. This is verified by the Office of the Registrar. Class standing will be posted as of 5pm Wednesday March 9, 2011. For Room Draw purposes, current class standing will be considered binding as of Monday, March 28, 2011. If you are unsure of your class standing, please speak with a staff member in the Registrar's office prior to Monday, March 28, 2011.

If you are not able to attend Room Draw with your group, you will need to come to the Housing Office prior to the day of your respective Room Draw to sign a 2011-2012 Housing Agreement.

This will allow the group members to go through Room Draw for you.

**\*\*Current Freshmen may not participate in the Omega or Nu Room Draw. Any remaining suites will be assigned at the discretion of the Office of Housing.**

### **Point System for Suites and Apartments**

The following point system is used to determine precedence for applicant groups in Omega, NU, and Oberg Suites. After assigning each applicant points, the sum will be computed for an entire application.

<b>Current Class Standing</b>	<b>Points</b>
Juniors and Seniors	10
Sophomores	5
Freshmen	1 (For Oberg suites only)

*Example:* A group of one senior, four juniors and three sophomores would have a value of 65 points for NU room draw.

**The seniority list will be posted in the windows of the Office of Student Affairs by 6:00 pm the day prior to the Room Draw and will be considered final.** A group with the most points will choose first during the appropriate Room Draw. In case of a tie, all groups affected will choose a numbered tile to determine the order of choosing a room. One member of each group will draw the tile. The group that draws the lowest number will have priority in choosing a room.

## **Forfeiture of Rooms/Spaces**

After Omega, NU, and Oberg Suites Room Draws, if one member withdraws from the unit, the remaining members will be given the option to fill the space with another person of equal or greater point value within five business days. If after five business days the vacant space has not been filled the remaining students **will lose** the right to occupy the unit. When two or more persons withdraw from the unit (at once or on two separate occasions) the remaining members **will lose** the right to occupy the unit.

Please remember that if you cancel your room after June 1, 2011, a **\$500** cancellation fee will be assessed to your student account.

## **Description of Room Draws**

### **Omega Apartments**

- All Omega suites are eligible to be Co-Ed per application rules. Male and Female students may not share same room assignment.
- Omega is reserved for upper-class students; therefore, **current freshmen may not** participate in the Omega Room Draw process.
- Omega applications can be picked up from the Housing Office beginning Monday, March 21, 2011.
- Applications are due back to the Housing Office by 12 Noon on Monday, April 4, 2011.
- If one person in the group cannot attend Room Draw, a 2011-2012 Housing Agreement must be signed in the Housing Office prior to the date of their corresponding room draw date.
- Omega has three different configurations: four single rooms; two double rooms; and two double rooms plus one single room.
- **The seniority list will be posted in the Student Affairs window by 6:00 PM the day prior to the Room Draw and will be considered final.**
- Once all apartments are filled during the Room Draw process, the Draw will be considered closed and final.
- A wait list will be kept until the beginning of Fall Semester. Any group not placed in Omega during the Draw may opt to be placed on the wait list. If any one member of the group attends NU or Oberg room draw and secures housing in NU or Oberg, the group will automatically forfeit their place on the Omega wait list.
- Once Fall Semester begins, the wait list will be considered **Null and Void**.

- The Office of Housing reserves the right to decline residency based on a relevant conduct record, history of room and dorm damage, or because of an outstanding financial balance on students account.
- Campus officials or their designees may enter any apartment, per specifications stated in the Housing Agreement and EC Book.
- Pets, as stated in the Pet Policy, are **NOT** allowed in Omega.
- **Please read *Point System for Suites and Apartments* for additional rules and guidelines.**

### NU Suites

- **NU suites are single gender.**
- NU applications can be picked up from the Housing Office beginning Monday, March 21, 2011.
- Applications are due back to the Housing Office by 12 Noon on Monday, April 11, 2011
- A group of 8 is required for an application to be accepted.
- If one person in the group cannot attend Room Draw a 2011-2012 Housing Agreement must be signed in the Housing Office prior to the corresponding room draw date.
- **The seniority list will be posted in the Student Affairs window by 6:00 PM the day prior to the Room Draw and will be considered final.**
- Once all suites are filled during the Room Draw process, the Draw will be considered closed and final.
- A wait list will be kept until the beginning of Fall Semester. Any group not placed in NU during the Draw may opt to be placed on the wait list.
- Once Fall Semester begins, the wait list will be considered **Null and Void**.
- The Office of Housing reserves the right to decline residency based on a relevant conduct record, history of room and dorm damage, or because of an outstanding financial balance on students account.
- Campus officials or their designees may enter any apartment, per specifications stated in the Housing Agreement and EC Book.
- Pets, as stated in the Pet Policy, are **NOT** allowed in NU.
- **Please read *Point System for Suites and Apartments* for additional rules and guidelines.**

## **2<sup>nd</sup> Floor Oberg Suites (Female)**

- Oberg Suites applications can be picked up at the Housing Office beginning Monday, March 21, 2011.
- Applications are due back to the Housing Office by 12 Noon on Monday, April 11, 2011.
- **The seniority list will be posted in the Student Affairs windows by 6:00 PM the day prior to the Room Draw and will be considered final.**
- Once all suites are filled during the Room Draw process, the Draw will be considered closed and final.
- There will be **NO** waitlist for Oberg suites.
- If one person in the group cannot attend Room Draw, a 2011-2012 Housing Agreement must be signed in the Housing Office prior to the respective room draw date.
- The Office of Housing reserves the right to decline residency based on a relevant conduct record, history of room and dorm damage, or because of an outstanding financial balance on students account.
- Campus officials or their designees may enter any room or suite, per specifications stated in the Housing Agreement and EC Book.
- Pets, as stated in the Pet Policy, are **NOT** allowed in Oberg.
- **Please read *Point System for Suites and Apartments* for additional rules and guidelines.**

## **Single Rooms**

- Single Applications can be picked up at the Housing Office beginning Monday, March 21, 2011.
- Applications are due back to the Housing Office by 12 Noon on Monday, April 11, 2011.
- For each house in Alpha, Beta, Gamma, Delta, and Epsilon one single room will be available.
- For each house in Kappa and Zeta three single rooms will be available.
- For the Iota complex a total of thirty-seven single rooms will be available.
- Omega singles are available by following the Omega Room Draw guidelines.
- **A student may experience difficulty obtaining a single room due to their class standing.**
- Single rooms **MAY NOT** be squatted.
- Students who are unable to secure a single during room draw will be placed on a waiting list based on the number tile pulled.

- **Once Fall semester begins, the wait list will be considered null and void.**
- The Office of Housing reserves the right to decline residency based on a relevant conduct record, history of room and dorm damage, or because of an outstanding financial balance on students account.
- Campus officials or their designees may enter any room, per specifications stated in the Housing Agreement and EC Book.
- If you are unable to attend singles room draw, stop by the Housing Office prior to your corresponding singles room draw date to sign the 2011-2012 Housing Agreement.
- **Please read *Priority System for Single Room Draw* for additional rules and guidelines.**

### **Health & Wellness Houses**

- Applications and Addendums for Health & Wellness Housing can be picked up at the Housing Office beginning Monday, April 11, 2011.
- Applications and Addendums are due back to the Housing Office by 12 Noon on Monday, April 18, 2011.
- These houses are for those students interested in an environment that specifically promotes healthy living. This consists of smoke-free, alcohol-free, and substance-free houses that sponsor wellness programming.
- Gershwin House in Alpha, Dante House in Beta, Beecher House in Epsilon, and Byars House in Iota are designated Health & Wellness Houses.
- Singles in Wellness Houses will be available during the Singles Room Draw. Students selecting singles in a Wellness House will be required to sign the Health and Wellness Addendum and adhere to Wellness House guidelines.
- If you are unable to attend Themed Room Draw with your planned roommate, please stop by the Housing Office to sign a housing agreement prior to April 20, 2011.
- The Office of Housing reserves the right to decline residency based on a relevant conduct record, history of room and dorm damage, or because of an outstanding financial balance on students account.
- Campus officials or their designees may enter any room, per specifications stated in the Housing Agreement and EC Book.
- **Please read *Priority System for Health & Wellness Room Draw* for additional rules and guidelines.**

### **Pet Houses**

- Applications and Addendums for Pet Housing can be picked up at the Housing Office beginning Monday, April 11, 2011.
- Applications and Addendums are due back to the Housing Office by 12 Noon on Monday, April 18, 2011.
- Darwin House in Beta, Hubbard House in Zeta, Ibsen House in Delta (All-Female), Beecher House in Epsilon (Wellness) and Scott House in Kappa are designated Pet Houses.
- Singles in Pet Houses will be available during the Singles Room Draw.
- If you are planning to bring a pet to campus, you **MUST** abide by all policies and procedures set forth in the Pet Policy (available in the online EC Book).
- A pet is considered to be a dog, cat, rabbit, ferret and duck.
- **All pets and domestic animals must be registered with the Pet Council at the beginning of each semester.**
- Pets are only permitted to live in designated Pet Houses.
- Pet Council will serve as the official decision maker regarding the permissibility of a pet.
- Representatives of Pet Council will be on hand at Room Draw or you may contact them at PetLife@eckerd.edu
- Please visit [www.eckerd.edu/housing/petlife](http://www.eckerd.edu/housing/petlife) for the Pet Policy.
- If you are unable to attend Themed Room Draw with your planned roommate, please stop by the Housing Office to sign a housing agreement prior to April 20, 2011.
- The Office of Housing reserves the right to decline residency based on a relevant conduct record, history of room and dorm damage, pet ownership history or because of an outstanding financial balance on students account.
- Campus officials or their designees may enter any room, per specifications stated in the Housing Agreement and EC Book.
- **Please read *Priority System for Pet Room Draw* for additional rules and guidelines.**

### **Community Service House (Knox House-Gamma Complex)**

- Applications and Addendums for the Community Service House can be picked up at the Housing Office beginning Monday, April 11, 2011.
- Applications and Addendums are due back to the Housing Office by 12 Noon on Monday, April 18, 2011.
- This house is for those students interested in an environment that specifically promotes Community Service.
- Singles in Community Service House will be available during the Singles Room Draw. Students selecting singles in a Community Service House will be required to sign the Community Service Addendum and adhere to Community Service House guidelines.
- If you are unable to attend Themed Room Draw with your planned roommate, please stop by the Housing Office to sign a housing agreement prior to April 20, 2011.
- The Office of Housing reserves the right to decline residency based on a relevant conduct record, history of room and dorm damage, or because of an outstanding financial balance on students account.
- Campus officials or their designees may enter any room, per specifications stated in the Housing Agreement and EC Book.
- **Please read *Priority System for Community Service. Room Draw* for additional rules and guidelines.**

### **Traditional**

- Applications for Traditional Housing Assignments can be picked up at the Housing Office beginning Monday, April 11, 2011.
- Applications are due back to the Housing Office by 12 Noon on Monday, April 18, 2011.
- **Traditional Room Draw will include all traditional houses which are not themed, as well as Sigma and Iota.**
- Students who do not receive a room in any of the prior draws will be able to participate in the Traditional Room Draw.
- Priority will be assigned by following the *Priority System by Class Standing* section of this booklet.
- Each student must attend Room Draw with a planned roommate. If you have a planned roommate but are unable to complete your application by 12 Noon, Monday April 18, 2011 you will be able to participate in Room Draw in Fox Hall at 3:30pm on April 20, 2011 with your roommate.

- Those students who do not have a planned roommate will be able to pick up a housing application outside of the Housing Office starting Thursday, April 21, 2011. If you wish to live in on campus housing for the 2011-2012 Academic year please be sure to return completed application to the Housing Office before departure for Summer Recess.
- If you are unable to attend Traditional Room Draw with your planned roommate, please stop by the Housing Office to sign a housing agreement prior to April 20, 2011.
- The Office of Housing reserves the right to decline residency based on a relevant conduct record, history of room and dorm damage, or because of an outstanding financial balance on students account.
- Campus officials or their designees may enter any room, per specifications stated in the Housing Agreement and EC Book.
- **Please read *Priority System for Traditional Room Draw* for additional rules and guidelines.**



## What Happens After Room Draw

### **What if you Miss Room Draw**

It will be assumed that if you do not contact the Housing Office after missing Room Draw, you will not be living on campus during the following academic year. If you do wish to live on campus, you must visit the Housing Office to make arrangements and you will be placed on a Housing Wait List.

### **Pre-registration for Classes**

If you do not pre-register for classes by the end of April 2011, but have attended Room Draw, you will forfeit your room assignment.

### **Changes after Room Draw**

Once names have been entered on housing rosters, no changes will be made until the entire Room Draw process is finished. If you would like to switch after the Draw, you should go to the Housing Office. At this point, no priority will be granted.

### **Confirmation of Assignment**

You will receive a confirmation email with your room assignment and roommate information after the entire Room Draw process is completed.

### **Day Student Status**

Students who participate in Room Draw and then wish to change to Day Student status must notify the Housing Office in writing by June 1, 2011 to avoid any additional charges.

### **Cancellation**

Notifying the Housing Office of cancellation after June 1, 2011 will result in a **\$500** cancellation fee for all housing.

**Students are responsible to cancel their individual housing assignment in writing to [housing@eckerd.edu](mailto:housing@eckerd.edu) from their Eckerd Email address.**

#### **For additional information please contact:**

Office of Student Affairs	727-864-8421
Housing Office	727-864-8899
Office of Residence Life	727-864-8980

**Or visit us online at [www.eckerd.edu/housing](http://www.eckerd.edu/housing)**

## Room Draw 2011 Calendar

- **Monday, March 21, 2011:**  
Applications available for Omega, NU, Oberg Suites, Singles, and Squatting
- **Monday, April 4, 2011:**  
12:00 Noon: Omega Applications Due
- **Wednesday, April 6, 2011 – Fox Hall:**  
1:00 PM – 2:30 PM: Omega Room Draw
- **Monday, April 11, 2011:**  
Applications and Addendums available for Pet, Health & Wellness, Community Service, and Traditional Housing
- **Monday, April 11, 2011:**  
12:00 Noon: NU, Oberg, and Single Applications Due
- **Wednesday, April 13, 2011 – Fox Hall:**  
12:45 PM – 1:00 PM: Oberg Room Draw  
1:00 PM – 1:45 PM: NU Room Draw  
2:00 PM – 3:30 PM: Singles Room Draw
- **Monday, April 18, 2011:**  
12 Noon: Squatting, Pet, Health & Wellness, Community Service, and Traditional Housing Applications and Addendums Due
- **Wednesday, April 20, 2011 – Fox Hall:**  
12:45 PM – 1:30 PM: Themed Room Draw  
1:45 PM – 3:30 PM: Traditional Room Draw  
3:30 PM - 4:00 PM: Students with Roommates and missed Application deadline

**All applications must be picked up at and returned to the Housing Office in Student Affairs located in Brown Hall.**

**All Room Draws will be held in Fox Hall.**